

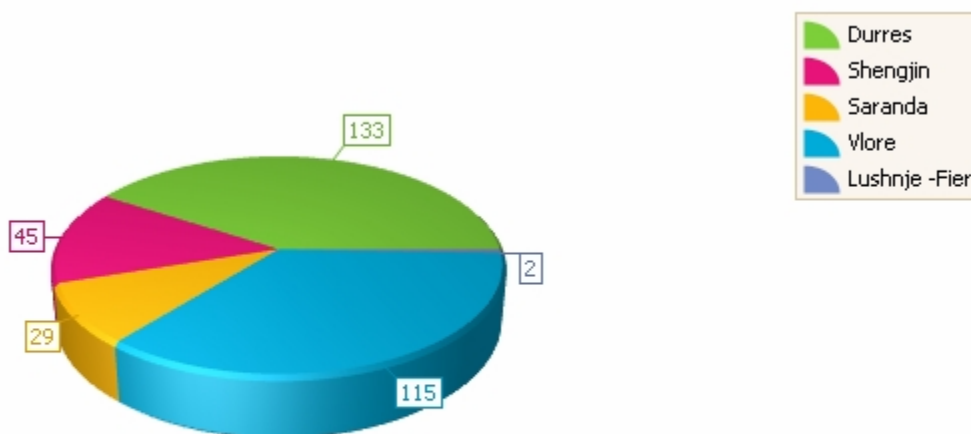


National Statistics Summary

Albania



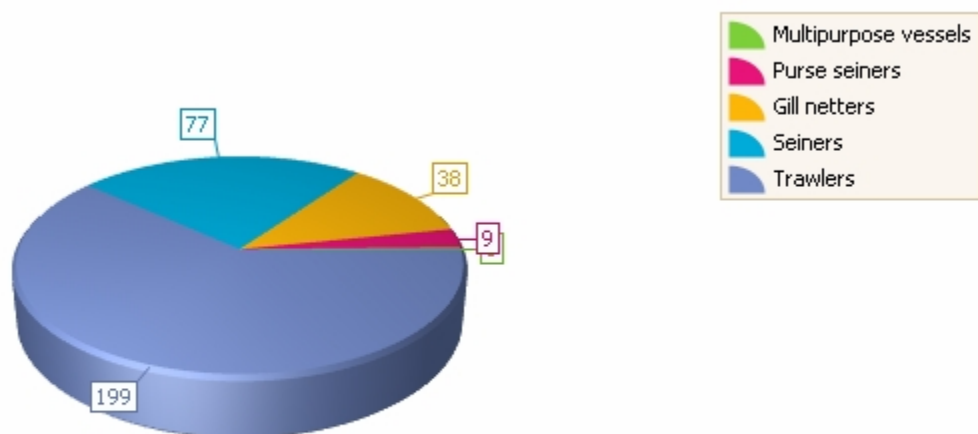
Distribution of Vessels by Port



Port	Number	%
Durres/Durres	133	41.0%
Shengjin/Shengjin	45	13.9%
Saranda/Saranda	29	9.0%
Vlore/Vlore	115	35.5%
Lushnje -Fier/Lushnje -Fier	2	0.6%
	324	



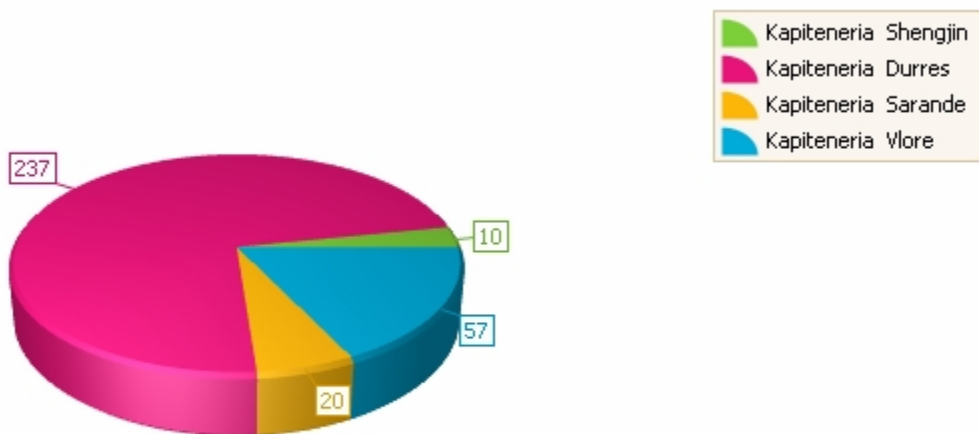
Distribution of Vessels by Vessel Type



Vessel Type	Number	%
Multipurpose vessels/Multipurpose vessels	1	0.3%
Purse seiners/Purse seiners	9	2.8%
Gill netters/Gill netters	38	11.7%
Seiners/Seiners	77	23.8%
Trawlers/Trawlers	199	61.4%
	324	



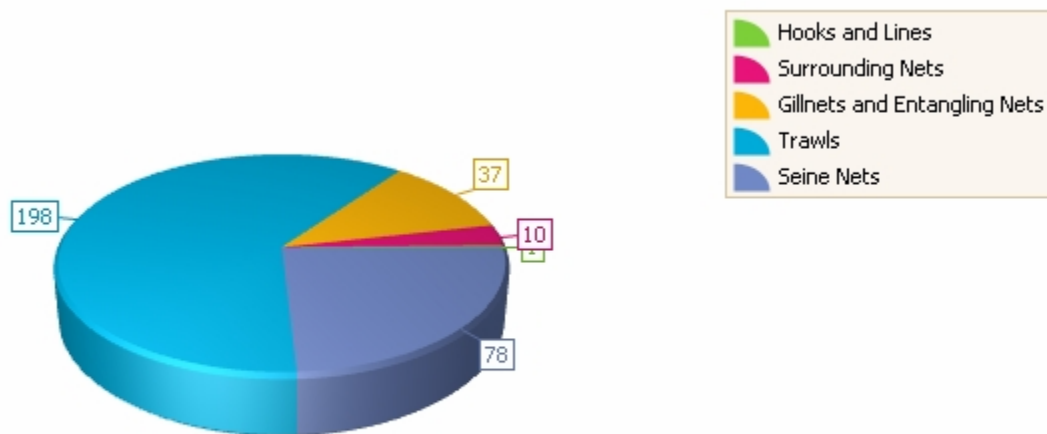
Distribution of Vessels by Minor Stratum



	Number	%
Kapiteneria Shengjin/Kapiteneria Shengjin	10	3.1%
Kapiteneria Durres/Kapiteneria Durres	237	73.1%
Kapiteneria Sarande/Kapiteneria Sarande	20	6.2%
Kapiteneria Vlore/Kapiteneria Vlore	57	17.6%
	324	



Distribution of Vessels by Main Gear Class



Gear Class	Number	%
Hooks and Lines/Hooks and Lines	1	0.3%
Surrounding Nets/Surrounding Nets	10	3.1%
Gillnets and Entangling Nets/Gillnets and Entangling Nets	37	11.4%
Trawls/Trawls	198	61.1%
Seine Nets/Seine Nets	78	24.1%
	324	



Distribution of Vessels by Port and Vessel Type

Shengjin/Shengjin	Vessel Type	Number	%
	Purse seiners/Purse seiners	2	4.4%
	Gill netters/Gill netters	5	11.1%
	Seiners/Seiners	1	2.2%
	Trawlers/Trawlers	37	82.2%
		45	13.9%
Durres/Durres	Vessel Type	Number	%
	Seiners/Seiners	24	18.0%
	Trawlers/Trawlers	96	72.2%
	Gill netters/Gill netters	10	7.5%
	Multipurpose vessels/Multipurpose vessels	1	0.8%
	Purse seiners/Purse seiners	2	1.5%
		133	41.0%
Vlore/Vlore	Vessel Type	Number	%
	Gill netters/Gill netters	15	13.0%
	Trawlers/Trawlers	56	48.7%
	Seiners/Seiners	40	34.8%
	Purse seiners/Purse seiners	4	3.5%
		115	35.5%
Saranda/Saranda	Vessel Type	Number	%
	Seiners/Seiners	11	37.9%
	Gill netters/Gill netters	7	24.1%
	Trawlers/Trawlers	10	34.5%
	Purse seiners/Purse seiners	1	3.4%
		29	9.0%
Lushnje -Fier/Lushnje -Fier	Vessel Type	Number	%
	Gill netters/Gill netters	1	50.0%
	Seiners/Seiners	1	50.0%



the Republic of Albania

2 0.6%

Grand Total **324**



Distribution of Vessels by Vessel Type and Port

Trawlers/Trawlers	Port	Number	%
	Durres/Durres	96	48.2%
	Vlore/Vlore	56	28.1%
	Saranda/Saranda	10	5.0%
	Shengjin/Shengjin	37	18.6%
		199	61.4%

Seiners/Seiners	Port	Number	%
	Saranda/Saranda	11	14.3%
	Durres/Durres	24	31.2%
	Shengjin/Shengjin	1	1.3%
	Vlore/Vlore	40	51.9%
	Lushnje -Fier/Lushnje -Fier	1	1.3%
		77	23.8%

Purse seiners/Purse seiners	Port	Number	%
	Shengjin/Shengjin	2	22.2%
	Vlore/Vlore	4	44.4%
	Saranda/Saranda	1	11.1%
	Durres/Durres	2	22.2%
		9	2.8%

Gill netters/Gill netters	Port	Number	%
	Vlore/Vlore	15	39.5%
	Saranda/Saranda	7	18.4%
	Durres/Durres	10	26.3%
	Shengjin/Shengjin	5	13.2%
	Lushnje -Fier/Lushnje -Fier	1	2.6%
		38	11.7%

Multipurpose vessels/Multipurpose vessels	Port	Number	%
	Durres/Durres	1	100.0%

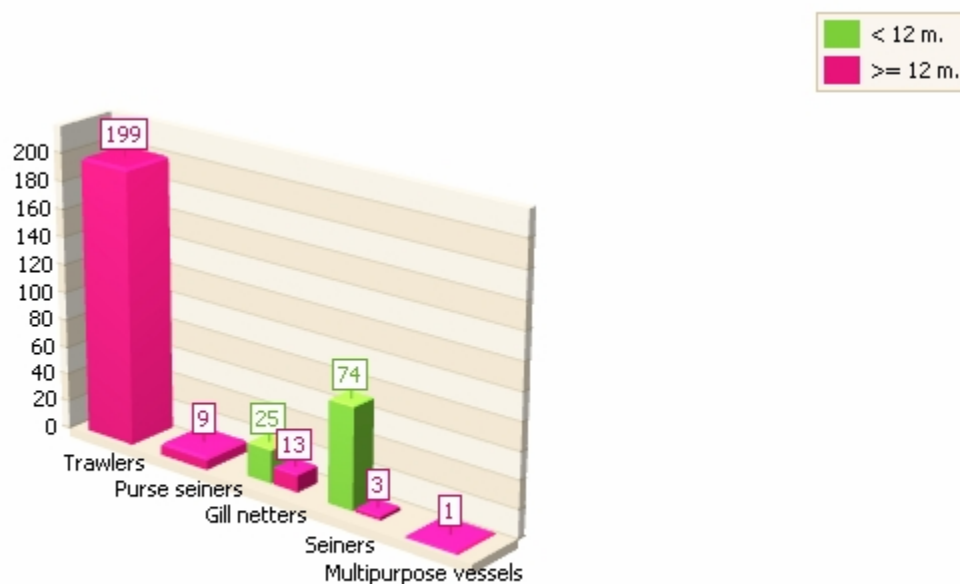


the Republic of Albania

	1	0.3%
Grand Total	324	



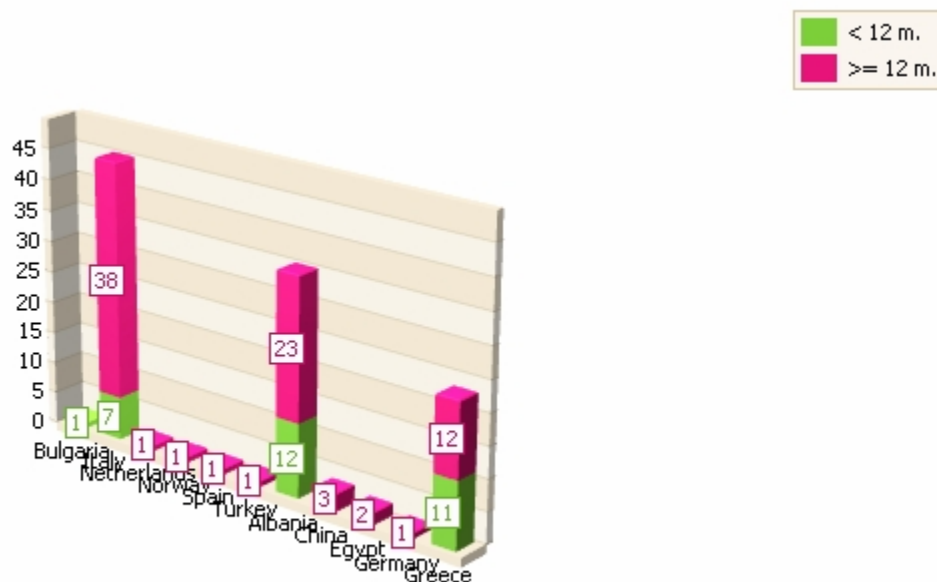
Distribution of Vessels by Vessel Type and Length



Vessel Type	< 12m.	%	>= 12m.	%	Total
Trawlers/Trawlers	0	0.0%	199	88.4%	199
Purse seiners/Purse seiners	0	0.0%	9	4.0%	9
Gill netters/Gill netters	25	25.3%	13	5.8%	38
Seiners/Seiners	74	74.7%	3	1.3%	77
Multipurpose vessels/Multipurpose vessels	0	0.0%	1	0.4%	1
	99		225		324



Distribution of Vessels by Manufacturing Country and Length



Country	< 12m.	%	>= 12m.	%	Total
Bulgaria/Bulgaria	1	3.2%	0	0.0%	1
Italy/Italy	7	22.6%	38	45.8%	45
Netherlands/Netherlands	0	0.0%	1	1.2%	1
Norway/Norway	0	0.0%	1	1.2%	1
Spain/Spain	0	0.0%	1	1.2%	1
Turkey/Turkey	0	0.0%	1	1.2%	1
Albania/Albania	12	38.7%	23	27.7%	35
China/China	0	0.0%	3	3.6%	3
Egypt/Egypt	0	0.0%	2	2.4%	2
Germany/Germany	0	0.0%	1	1.2%	1
Greece/Greece	11	35.5%	12	14.5%	23
	31		83		114



Distribution of Crew (full-time members) by Vessel Type

No Data Available



Distribution of Equipment

Navigation equipment/Navigation equipment

Equipment Type	Number of Vessels	% of Vessels
Loran C/Loran C	20	6.2%
Other/Other	8	2.5%
Unknown/Unknown	0	0%
Loran A/Loran A	1	0.3%
GPS (Satellite navigation)/GPS (Satellite navigation)	62	19.1%
Radar/Radar	130	40.1%
Omega/Omega	0	0%
Decca/Decca	0	0%
Meteorological map receiver/Meteorological map receiver	0	0%
Direction finder/Direction finder	151	46.6%
Automatic pilot/Automatic pilot	6	1.9%
Gyrocompass/Gyrocompass	13	4.0%
	391	

Communication apparatus/Communication apparatus

Equipment Type	Number of Vessels	% of Vessels
Radio VHF/Radio VHF	181	55.9%
Radio telephone/Radio telephone	54	16.7%
Cellular phone/Cellular phone	66	20.4%
Fax/Fax	0	0%
Satellite Radio/Satellite Radio	0	0%
Other/Other	9	2.8%
Unknown/Unknown	0	0%
Telegraph/Telegraph	0	0%
	310	

Fish finder/Fish finder

Equipment Type	Number of Vessels	% of Vessels
Echo sounder/Echo sounder	162	50.0%
Sonar/Sonar	14	4.3%
Net sond/Net sond	1	0.3%
Other/Other	3	0.9%
Unknown/Unknown	0	0%
	180	



Safety equipment/Safety equipment

Equipment Type	Number of Vessels	% of Vessels
Belt/Belt	185	57.1%
Lifeboat/Lifeboat	169	52.2%
Flare/Flare	94	29.0%
Fire Extinguisher/Fire Extinguisher	131	40.4%
Other/Other	64	19.8%
	643	

Preservation equipment/Preservation equipment

Equipment Type	Number of Vessels	% of Vessels
Fresh fish hold/Fresh fish hold	75	23.1%
Live fish hold/Live fish hold	13	4.0%
Cold storage/Cold storage	80	24.7%
Seawater production/Seawater production	2	0.6%
Ice plant/Ice plant	8	2.5%
Unknown/Unknown	0	0%
Other/Other	49	15.1%
	227	

Processing equipment/Processing equipment

Equipment Type	Number of Vessels	% of Vessels
Freezer/Freezer	4	1.2%
Fish meal production/Fish meal production	1	0.3%
Fish oil production/Fish oil production	1	0.3%
Filleter/Filleter	0	0%
Other/Other	0	0%
Unknown/Unknown	0	0%
	6	

Other equipment/Other equipment

Equipment Type	Number of Vessels	% of Vessels
Lift Equipment/Lift equipment	37	11.4%
Fish pumps/Fish pumps	32	9.9%
Fishing lights/Fishing lights	42	13.0%
Other/Other	1	0.3%
Unknown/Unknown	0	0%
	112	



Basic Numerical Statistics

Length

No. of Observations	324	Minimum	0.50	Maximum	31.00
Total	4779.21	Mean	14.751	Mode	22.00
Variance	52.511	Standard Deviation	7.246	Standard Error	0.403
Confidence Interval	13.962 - 15.540				

GT

No. of Observations	324	Minimum	0.110	Maximum	280.000
Total	10633.510	Mean	32.819	Mode	10.000
Variance	1452.402	Standard Deviation	38.110	Standard Error	2.117
Confidence Interval	28.670 - 36.969				

Power

No. of Observations	324	Minimum	0.74	Maximum	1081.30
Total	56640.86	Mean	174.817	Mode	164.05
Variance	20751.488	Standard Deviation	144.054	Standard Error	8.003
Confidence Interval	159.132 - 190.503				